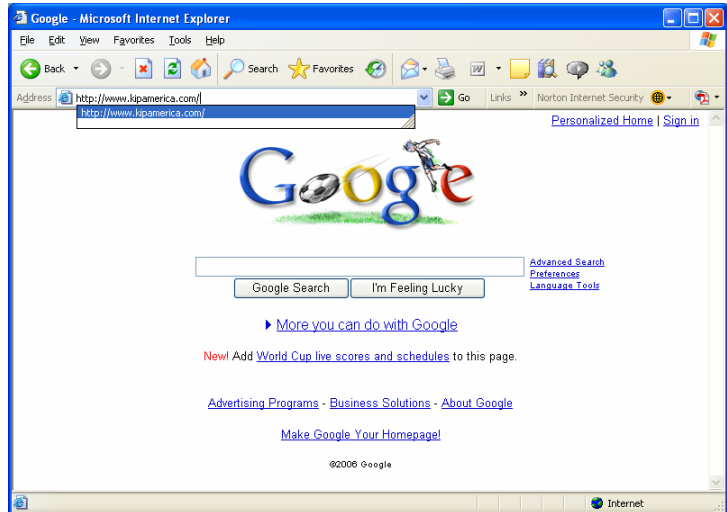


Use your web browser to go to:

<http://www.kipamerica.com>

Jeffcoat blueprint also has this driver on our info/instructions site at:

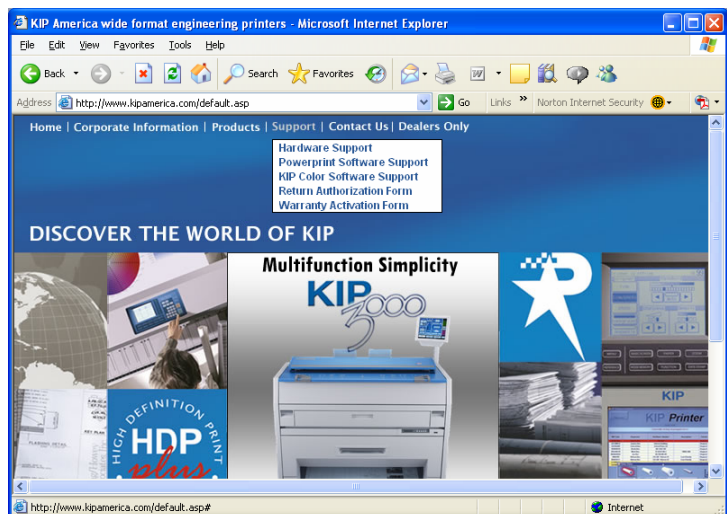
www.jeffcoatblueprint.com



On the

[kipamerica.com](http://www.kipamerica.com)

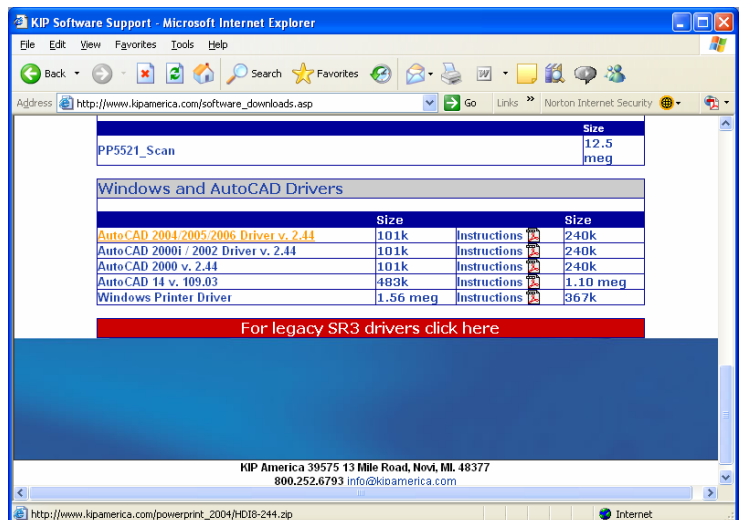
Select support on the menu bar



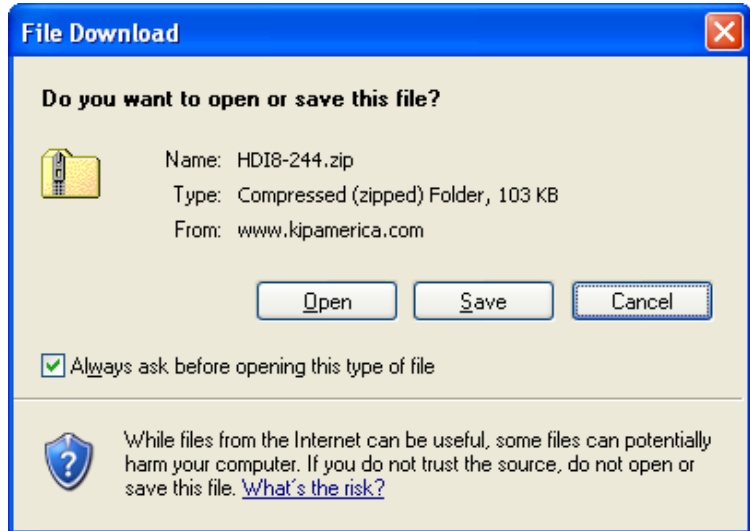
Under support select the “Powerprint Software Support”



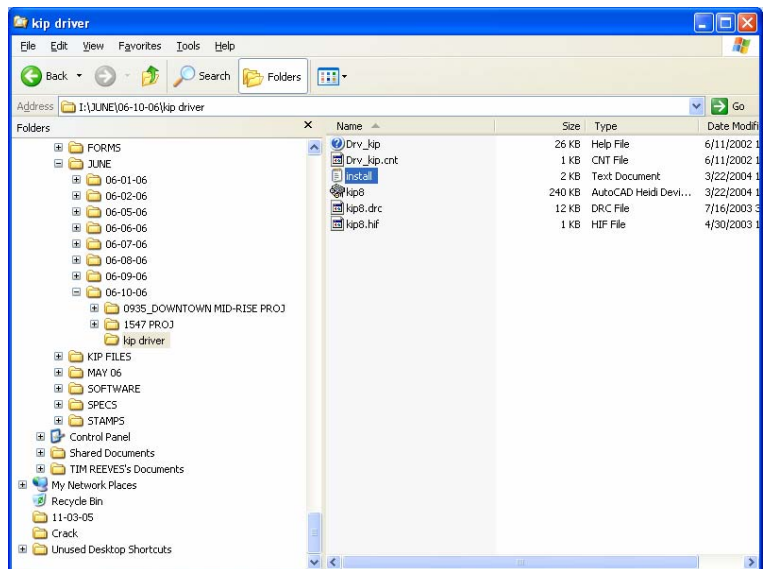
Scroll down to bottom of the page, and you will notice that there are several different drivers. Kip drivers are applicable to the version of AutoCAD you are using; find the appropriate driver and download it.



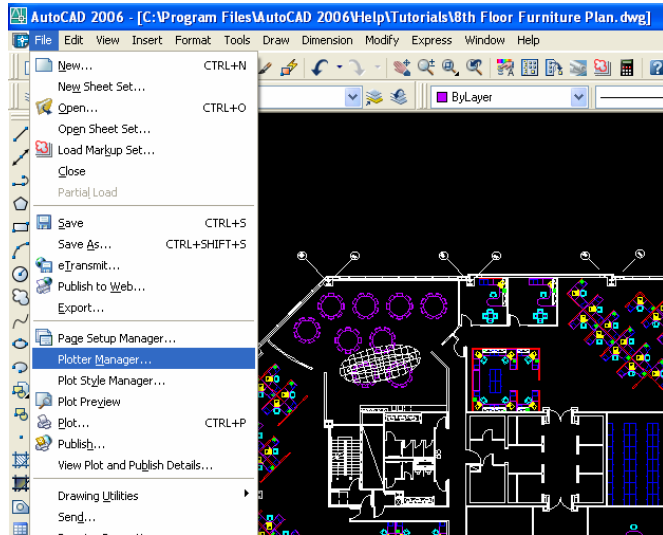
Once downloaded,
unzip the file and open it



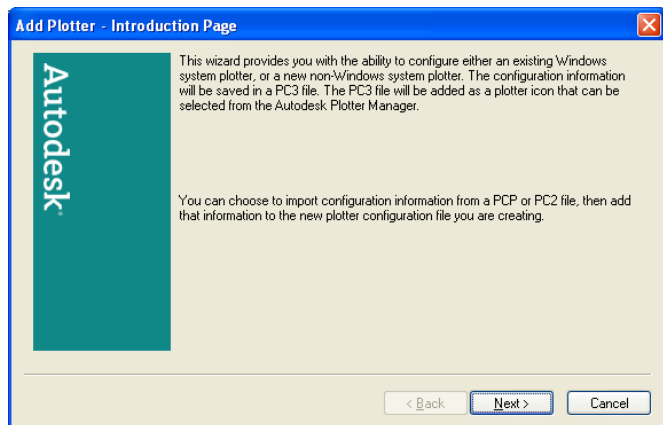
Make a temporary folder
on your workstation,
and place the zipped
contents within the
newly created folder



After downloading the
kip driver;
Open your DWG file,
then on the menu bar
select file, then tag
“plotter manager”

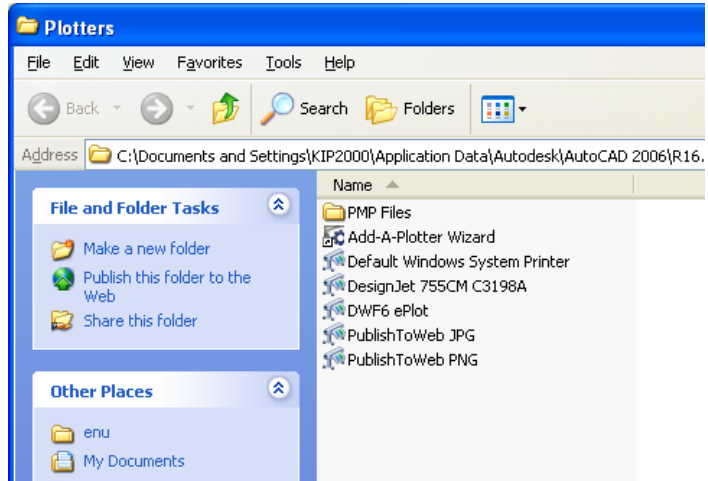


Choose next to
continue.



Select:

“Add-A-Plotter Wizard”

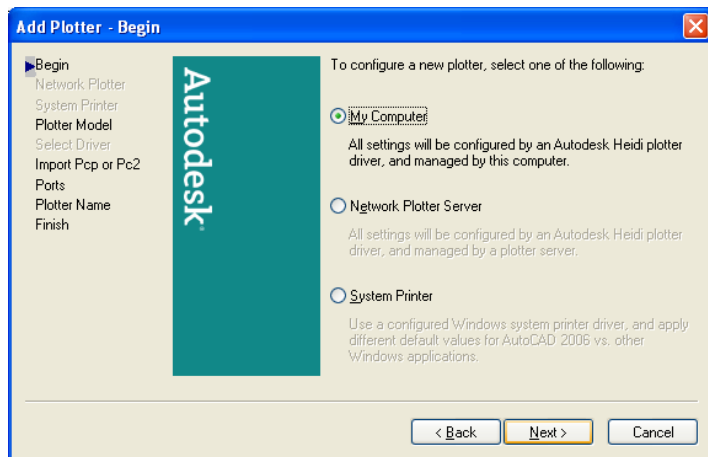


You may opt to install this driver throughout your office or just one workstation.

For the purposes of this tutorial, we will install on one workstation

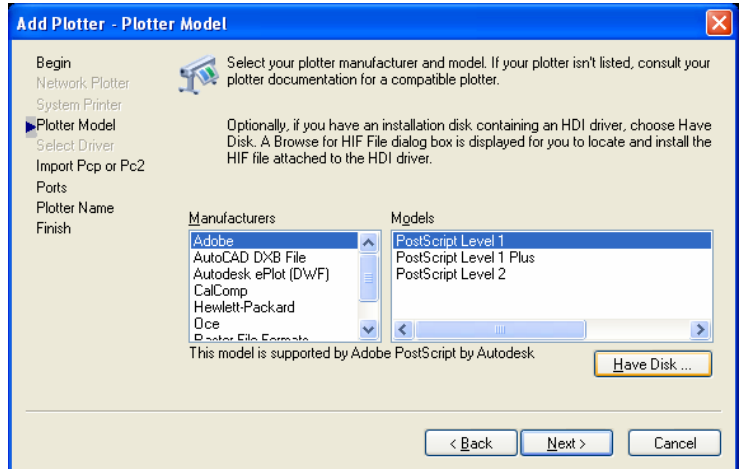
Select: “My computer”

Then tag next button



At this screen select
“Have Disk”

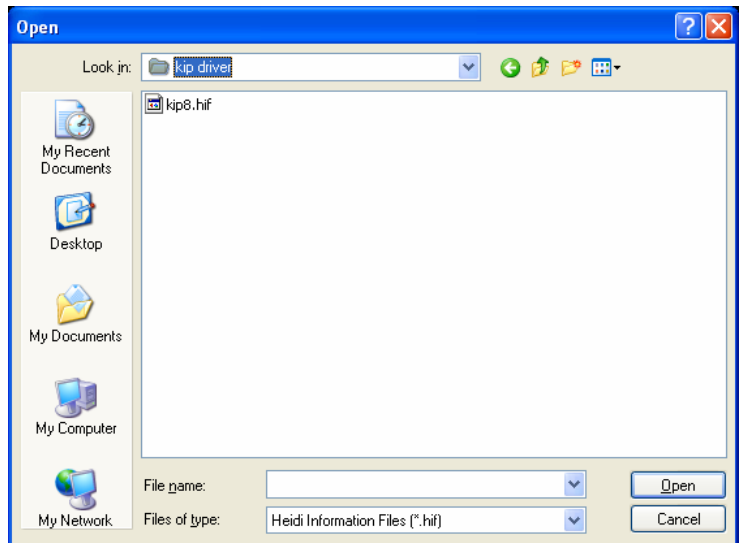
This will open a
browse command,
Look for your newly
created folder you
just made with the
downloaded contents
from kipamerica.



Once found, within
the folder there
should be a Heidi
file named:

“kip6”,
“kip7” or,
“kip8”

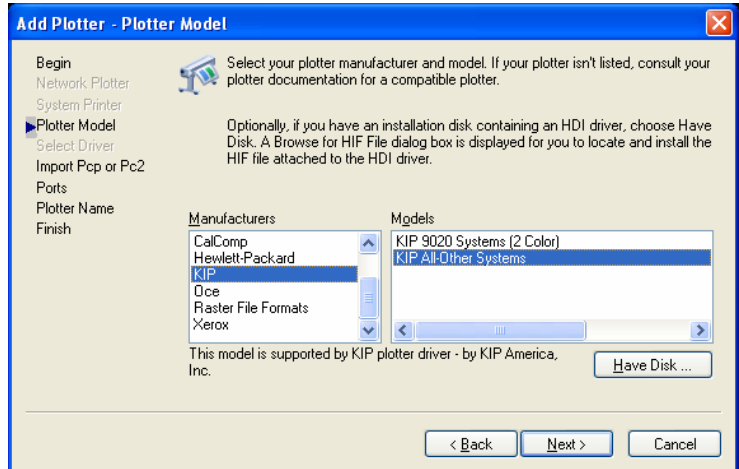
Tag it and open it



Under manufactures column, select KIP as your device.

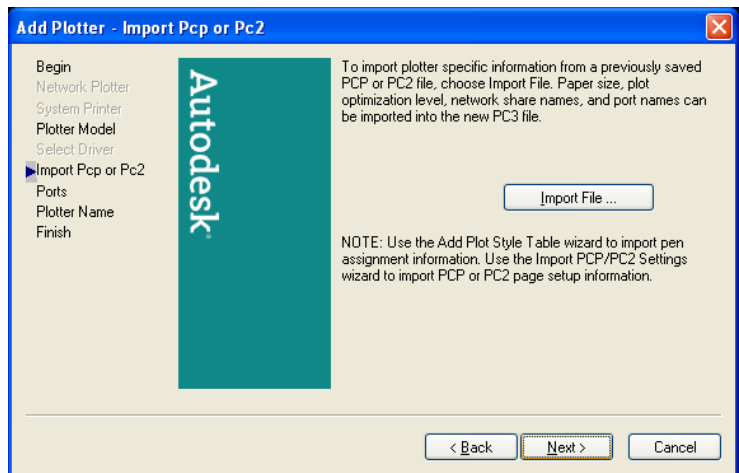
Select: "Kip All-Other Systems"

Note the kip 9020 is a black and red plotter, of which Jeffcoat Blueprint does not use.



You already have imported the driver, so

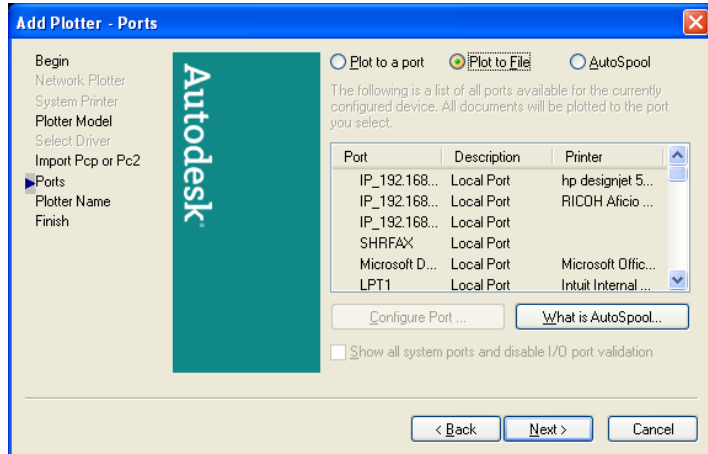
Select: "Next" to continue



You are not installing any hardware to your workstation, so

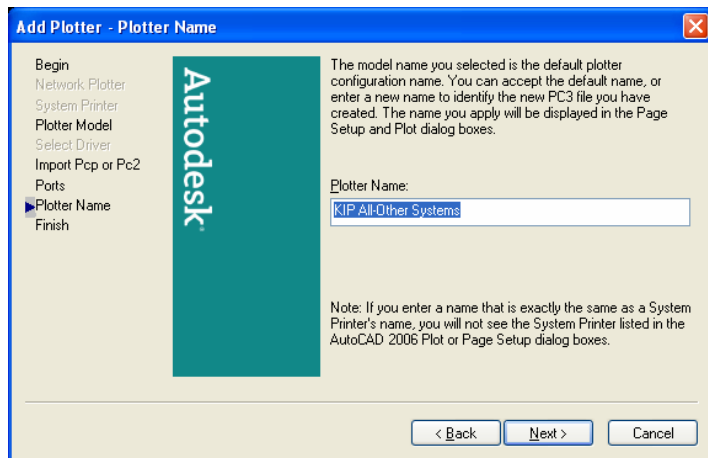
Select: “plot to File”

Then “Next” to continue



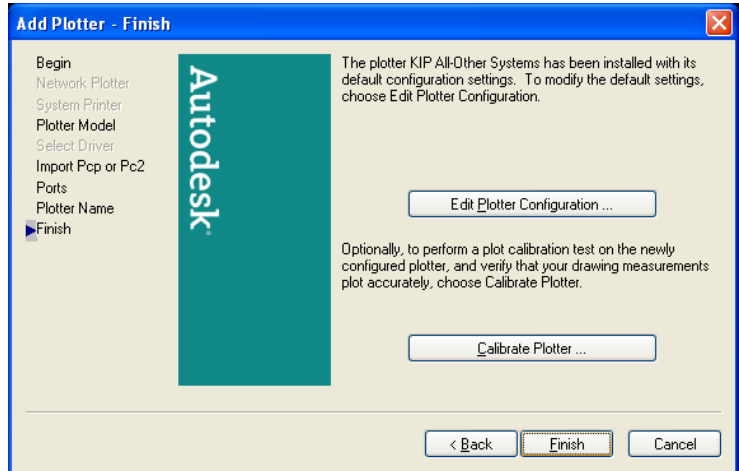
Leave the plotter name as is

Select: “Next” to finish the plotter installation



You are done installing the KIP plotter

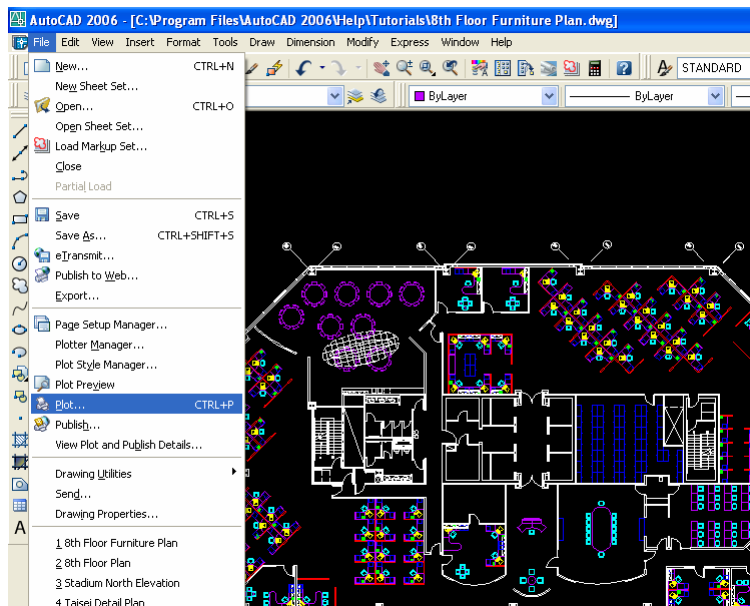
Select: "Finish" to start creating KIP PLT files



With your DWG file open,

Tag "File" on the upper menu bar, then,

Select: "Plot"



Making PLT for a KIP

Page setup/Name: please name PLT files the same as they appear on the page.

Printer/plotter: KIP All-Other Systems.pc3

Be sure: (plot to file is checked)

Paper size: choose your desired sheet size

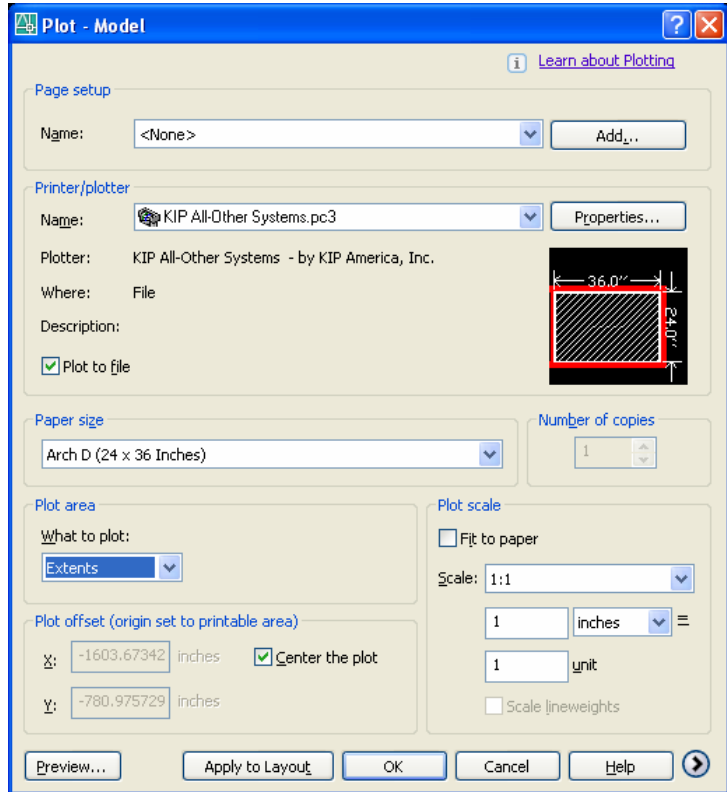
Plot area: choose the printable area

Plot scale: select you drawing unit or scale.

***Always preview before selection OK. ***

Select: "OK" when all is complete and save PLTs appropriately.

***There are more in-depth instructions on creating PLT files within the downloadable PDF termed:
"Making PLT for an HP plotter"



These instructions are intended for the strict use of creating PLT files for Jeffcoat Blueprint only, and any copying or unauthorized use is prohibited.